



HIGH STREET QUARTER

HOUNSLOW



KEMPTON APARTMENTS
ONE, TWO AND THREE-BEDROOM FLOORPLANS

BARRATT
— LONDON —

WELCOME TO
HIGH STREET QUARTER
HOUNSLOW

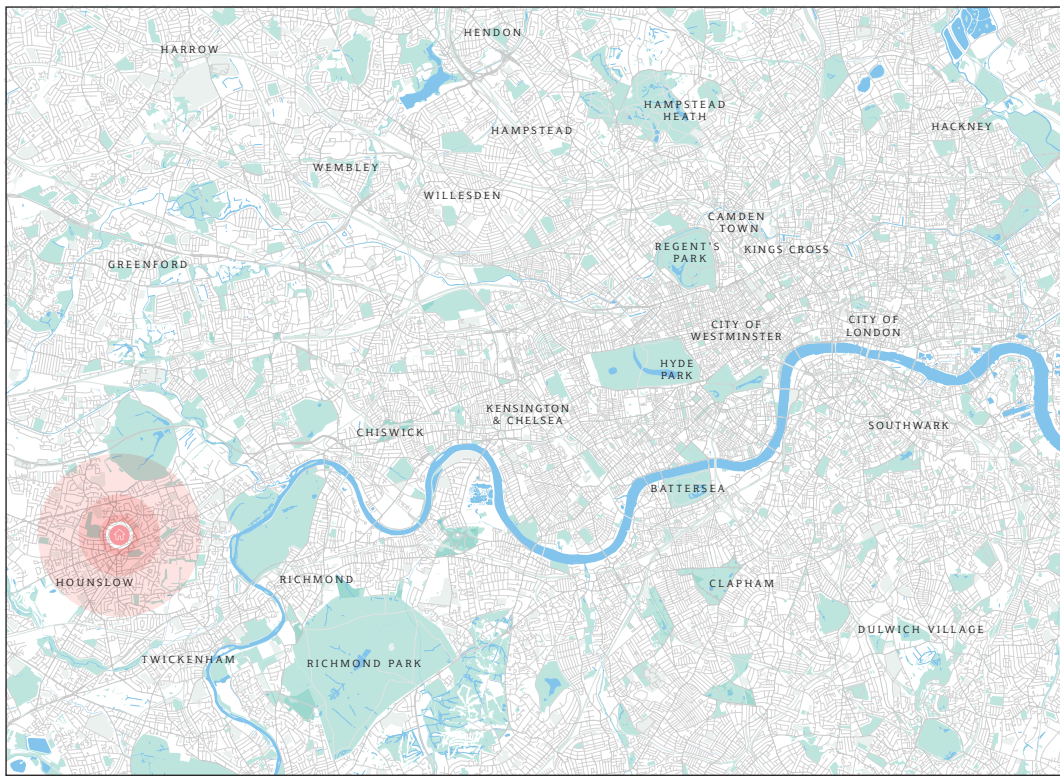


Be at the heart of it

Imagine coming home to your own bright, contemporary apartment. A place designed for modern living, where community matters, and you are part of it.

High Street Quarter Hounslow is an exciting new development, located in Hounslow town centre. Built around a public square with shops, restaurants, cafés and a multiplex cinema, it will offer a wealth of amenities on your doorstep.

This pristine pedestrianised development will provide a range of one, two and three-bedroom apartments, all with their own private outdoor space. Living at High Street Quarter Hounslow will offer you the perfect opportunity to enjoy a cosmopolitan lifestyle, right in the heart of a buzzing new residential quarter.



A London town with an exciting future

High Street Quarter Hounslow is situated in the London Borough of Hounslow, just a stone's throw from public transport links to central London and Heathrow Airport.

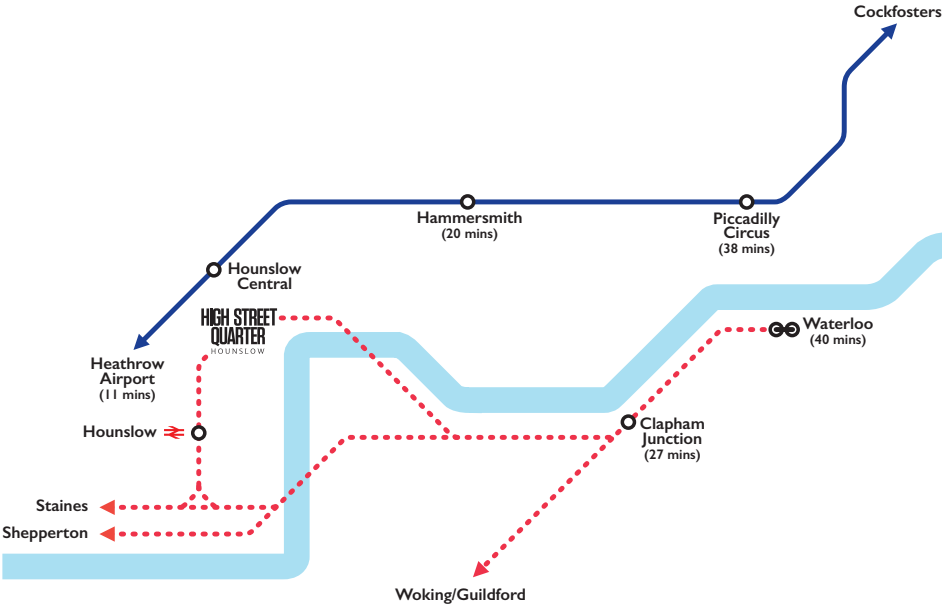
This pristine new development will extend the town's main high street and improve – and add to – local amenities. A wide-ranging regeneration programme will be ongoing in the area, helping to transform it into a diverse, cosmopolitan town centre community.



The best of London within easy reach

Getting around couldn't be easier. Hounslow has a wealth of transport options and offers easy access to Heathrow Airport, central London and further afield. High Street Quarter Hounslow will be a five-minute walk away from Hounslow East Tube station, making central London accessible in around 35 minutes and Heathrow in less than 20 minutes. The development will be served by the Piccadilly line and National Rail, and the M25 is just 25 minutes away by car.

By foot	By train (from Hounslow station)
5-minute walk to Hounslow East (Piccadilly line)	15 minutes to Richmond station
7-minute walk to Hounslow Central (Piccadilly line)	27 minutes to Clapham Junction
7-minute walk to Hounslow West (Piccadilly line)	33 minutes to Vauxhall
12-minute walk to Hounslow rail station (South West trains)	40 minutes to Waterloo
By Tube (from Hounslow East Tube)	By car
37 minutes to Green Park	16-minute drive to Twickenham
41 minutes to Paddington	20-minute drive to Richmond Park
45 minutes to Oxford Street	25-minute drive to the M25
50 minutes to Kings Cross St Pancras	27-minute drive to Kingston upon Thames
56 minutes to Bank	To London airports
	Heathrow 19 minutes by car or 11 minutes by Tube
	Gatwick 52 minutes by car or 1 hour 15 minutes by train



Travel times are approximate.
Sources: tfl.gov.uk and maps.google.com



Treaty Centre, Hounslow



Richmond riverside

An exciting residential quarter coming to the heart of Hounslow

Along with a number of other partners, Barratt London is working with the London Borough of Hounslow to help deliver a masterplan for the area. A number of regeneration projects will act as a catalyst for change and to attract further investment into the area. High Street Quarter Hounslow will help to transform the town centre with new high-quality housing and communal facilities.

In addition to new homes, High Street Quarter Hounslow will include plenty of public space, which will be filled with shops, restaurants, event space and a brand new multiplex cinema. The result will be a thriving and cosmopolitan central location for you to call home.

The development has been designed to maximise private and communal space – all homes will have their own terrace or balcony and communal gardens will provide attractive outdoor space for residents.

Underground parking will be available on selected homes at an additional cost, with a number of electric car charging points. Over 200 cycle spaces will also be available in the underground car park for residents.





Airy interiors finished to perfection

Whether you choose a one, two or three-bedroom apartment, you'll enjoy a home filled with light and style. Open-plan living areas feature floor-to-ceiling glazing allowing natural light to flood in, while kitchens are equipped with a full range of modern appliances, making cooking and entertaining a pleasure. Contemporary bathrooms and en suites, complete with stylish fittings in white and chrome, are finished with attractive ceramic wall tiling.

All homes have their own private balcony or terrace, providing an outdoor extension of your living space, allowing you to enjoy the buzzing atmosphere of Hounslow town centre.





Great shopping and dining on your doorstep

Hounslow is a diverse and rapidly growing community with a wide range of eateries, attractions, museums and parks. You will find there's something for everyone, whatever you like doing.

For a bit of retail therapy there's the Treaty Centre and the High Street.

With a wide range of drinking and dining options, including cafés, restaurants and bars, you'll never be stuck for choice. Local favourites include Takaa Tak, Indian Relish, Sangeetha, Folvark and Cafe Restaurante Moniz.

If you are a culture fan, The Arts Centre is a short walk away.

Popular places to explore

Fill your weekends by visiting some of the other attractions local to High Street Quarter Hounslow.

Syon House and Park is one of the last great houses of London. Situated in beautiful countryside, it's just a 10-minute drive or short bus journey away.

One of the city's finest, Richmond Park is a National Nature Reserve and the largest of London's eight Royal Parks. You could be at this perfect location for leisurely walks and wildlife spotting in just 25 minutes by car.

A great day out for the whole family is the fascinating London Museum of Water and Steam. This collection of magnificent steam and pumping engines is just up the road in Brentford.

If you love rugby, you'll love Twickenham. Home to Twickenham Stadium and the World Rugby Museum, this pretty riverside town is well worth a visit, and only 15 minutes away by car.

For even more shopping options, Kingston upon Thames is easily reachable by car or public transport. Home to over 500 stores, two shopping centres and a bustling market place, it's the perfect place to shop 'til you drop. Also a hub for art and culture, you'll find there's something for everyone here, making it a great day out for all the family.



Syon House, Isleworth



Twickenham Rugby Stadium



Twickenham Riverside



Kingston town centre



Richmond Park



Site plan

High Street Quarter Hounslow is well positioned for a contemporary lifestyle, with a busy high street, entertainment and plenty to do right on the doorstep. This vibrant, multicultural town centre has something

to suit everyone, with great Tube, rail and road connections, 'outstanding' schools within walking distance, cultural attractions and plenty of green spaces close by.

1 Level 1 residents' communal garden

2 Level 4 residents' communal garden



Kempton Apartments



Level 1



Level 2



Level 3



Level 4



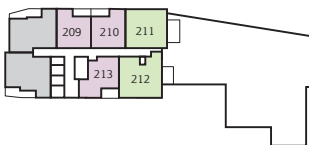
Level 5



Level 6



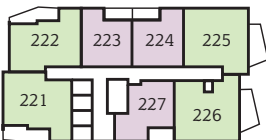
Level 7



Level 8



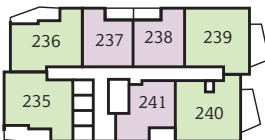
Level 9



Level 10



Level 11



Level 12



Level 13



Level 14



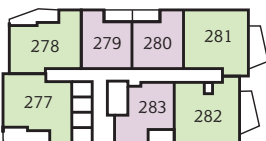
Level 15



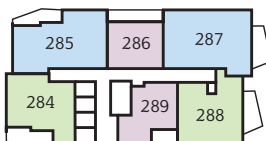
Level 16



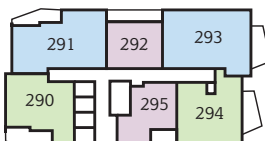
Level 17



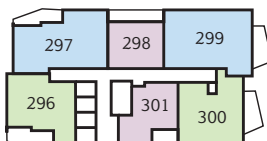
Level 18



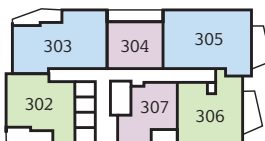
Level 19



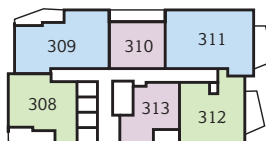
Level 20



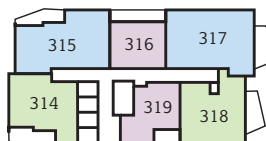
Level 21



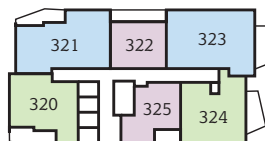
Level 22



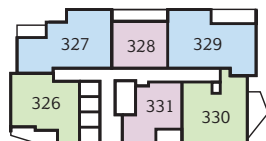
Level 23



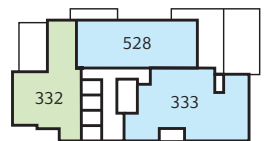
Level 24



Level 25

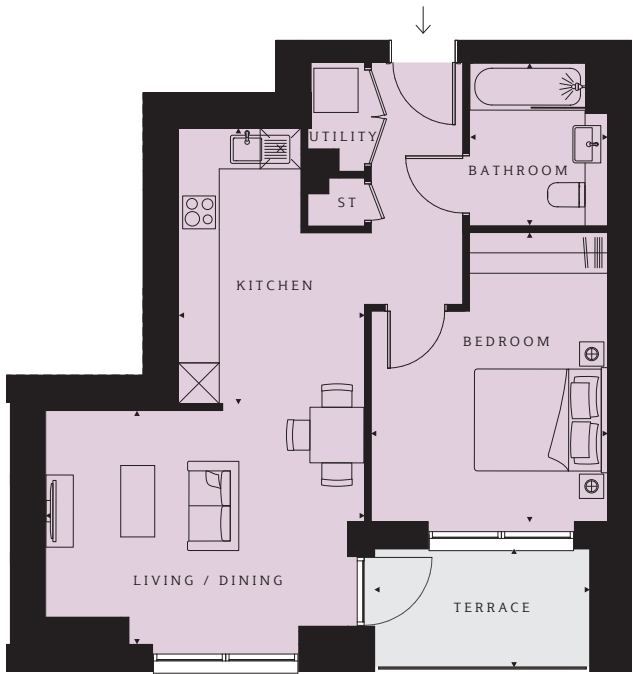


Level 26



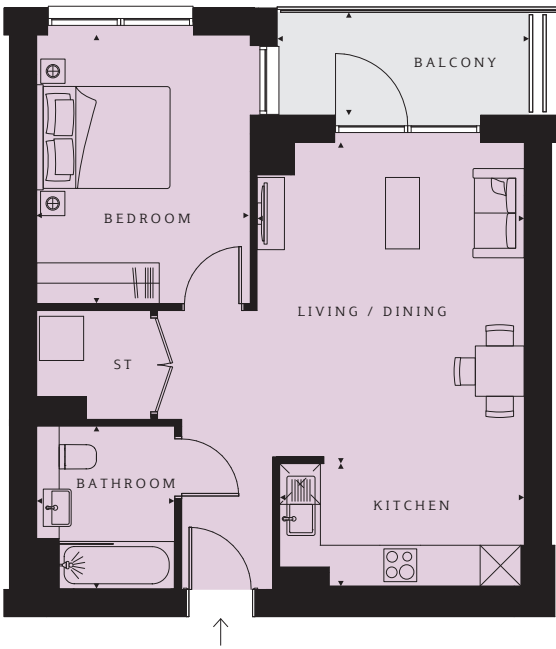
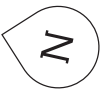
One-bedroom apartments Two-bedroom apartments Three-bedroom apartments Affordable housing

Kempton Apartments
1 bedroom
apartment



PLOT 142 (2)
Kitchen 13'3" x 9'0" (4050 x 2735mm)
Living/Dining 15'4" x 11'3" (4685 x 3437mm)
Bedroom 13'11" x 11'5" (4253 x 3470mm)
Bathroom 7'10" x 6'8" (2400 x 2030mm)
TOTAL AREA 548 sq ft (50.9 sq m)
Terrace 10'4" x 5'8" (3160 x 1737mm)

Level 2



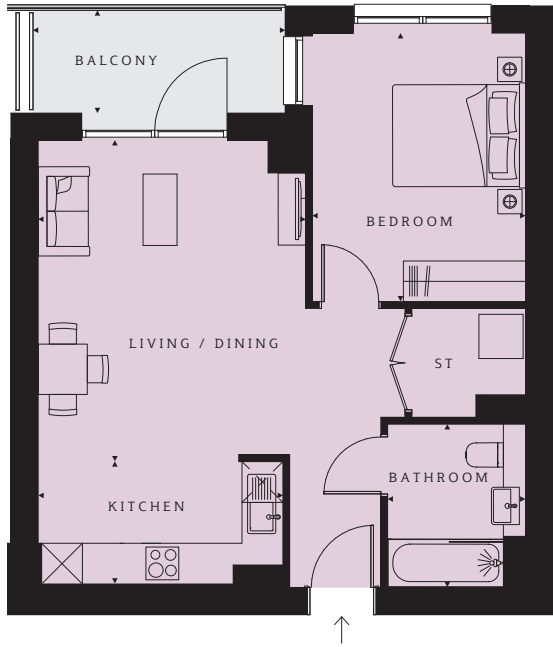
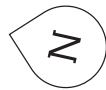
PLOTS 545 (1), 137 (2), 154 (3), 171 (4), 188 (5), 202 (6), 209 (7), 216 (8), 223 (9), 230 (10), 237 (11), 244 (12), 251 (13), 258 (14), 265 (15), 272 (16), 279 (17)
Kitchen 11'10" x 5'11" (3595 x 1800mm)
Living/Dining 15'6" x 12'11" (4723 x 3927mm)
Bedroom 12'11" x 10'3" (3948 x 3115mm)
Bathroom 7'10" x 6'8" (2400 x 2030mm)
TOTAL AREA 546 sq ft (50.7 sq m)
Balcony 12'2" x 5'0" (3703 x 1512mm)

Levels 545, 137, 154, 171, 188, 202, 209, 216, 223, 230, 237, 244, 251, 258, 265, 272 & 279



Kempton Apartments

1 bedroom apartment



PLOTS 138 (2), 155 (3), 172 (4), 189 (5), 203 (6), 210 (7), 217 (8), 224 (9), 231 (10), 238 (11), 245 (12), 252 (13), 259 (14), 266 (15), 273 (16), 280 (17)

Kitchen
11'10" x 5'11" (3595 x 1800mm)

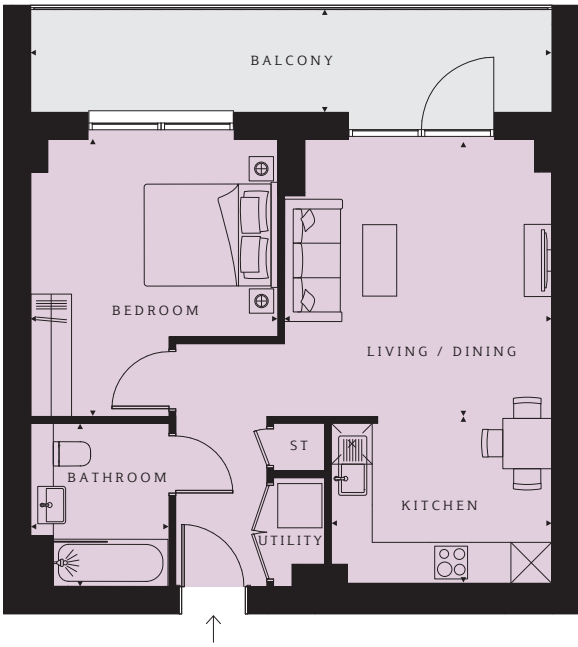
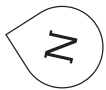
Living/Dining
15'6" x 12'11" (4723 x 3928mm)

Bedroom
12'11" x 10'4" (3948 x 3137mm)

Bathroom
7'10" x 6'8" (2400 x 2030mm)

TOTAL AREA
546 sq ft (50.7 sq m)

Balcony
12'2" x 5'0" (3707 x 1512mm)



PLOTS 286 (18), 292 (19), 298 (20), 304 (21), 310 (22), 316 (23), 322 (24), 328 (25)

Kitchen
10'7" x 8'0" (3237 x 2450mm)

Living/Dining
13'3" x 12'11" (4040 x 3928mm)

Bedroom
13'4" x 11'11" (4073 x 3627mm)

Bathroom
7'10" x 6'8" (2400 x 2030mm)

TOTAL AREA
528 sq ft (49.1 sq m)

Balcony
25'1" x 5'0" (7655 x 1512mm)

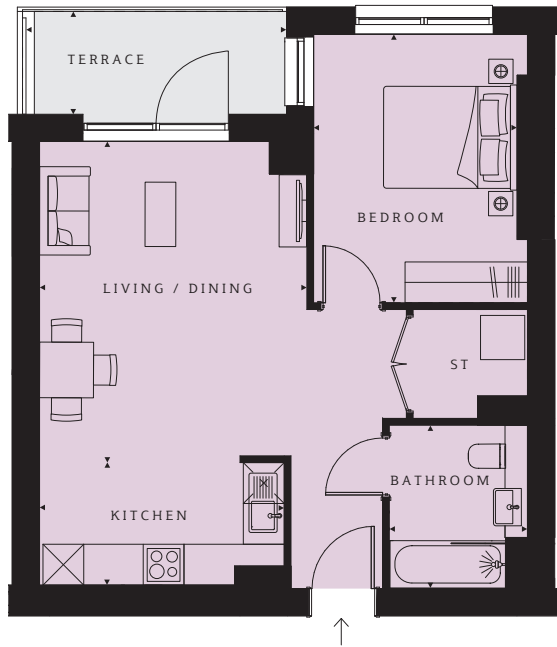
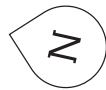
Levels 2, 3, 4, 5, 6, 7, 8, 9, 10, 11, 12, 13, 14, 15, 16 & 17



Level 2



Kempton Apartments
1 bedroom
apartment



PLOT 546 (1)

Kitchen
11'8" x 5'11" (3567 x 1800mm)

Living/Dining
15'6" x 12'11" (4723 x 3928mm)

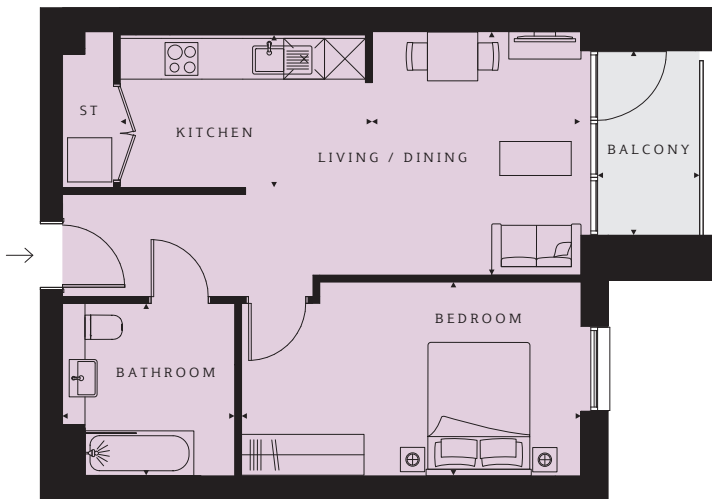
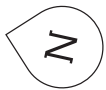
Bedroom
12'11" x 9'10" (3948 x 2994mm)

Bathroom
7'10" x 6'8" (2400 x 2030mm)

TOTAL AREA
543 sq ft (50.4 sq m)

Terrace
12'7" x 5'0" (3830 x 1512mm)

Level 1



PLOTS 197 (5), 558 (6)

Kitchen
12'2" x 7'4" (3700 x 2245mm)

Living/Dining
11'9" x 10'0" (3580 x 3060mm)

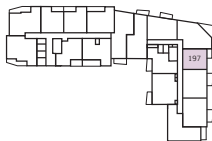
Bedroom
16'4" x 9'4" (4980 x 2850mm)

Bathroom
8'4" x 8'4" (2535 x 2530mm)

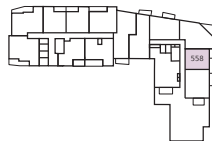
TOTAL AREA
530 sq ft (49.2 sq m)

Balcony
8'11" x 4'11" (2710 x 1500mm)

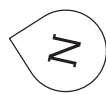
Level 5



Level 6



Kempton Apartments
1 bedroom
apartment



PLOTS 134 (1), 151 (2),
168 (3), 185 (4), 199 (5)

Kitchen
9'1" x 6'3" (2763 x 1900mm)

Living/Dining
14'0" x 12'8" (4275 x 3860mm)

Bedroom
14'1" x 13'5" (4294 x 4086mm)

Bathroom
7'10" x 6'8" (2400 x 2030mm)

TOTAL AREA
545 sq ft (50.6 sq m)

Balcony
12'11" x 5'4" (3933 x 1624mm)

Levels 1, 2, 3, 4 & 5



PLOTS 159 (3), 176 (4), 193 (5),
206 (6), 213 (7), 220 (8),
227 (9), 234 (10), 241 (11),
248 (12), 255 (13), 262 (14),
269 (15), 276 (16), 283 (17),
289 (18), 295 (19), 301 (20),
307 (21), 313 (22), 319 (23),
325 (24), 331 (25)

Kitchen
13'7" x 9'0" (4150 x 2735mm)

Living/Dining
15'4" x 11'3" (4680 x 3437mm)

Bedroom
13'11" x 11'5" (4253 x 3470mm)

Bathroom
7'10" x 6'8" (2400 x 2030mm)

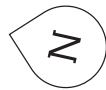
TOTAL AREA
548 sq ft (50.9 sq m)

Balcony
10'4" x 5'7" (3160 x 1712mm)

Levels 3, 4, 5, 6, 7, 8, 9, 10, 11, 12, 13, 14,
15, 16, 17, 18, 19, 20, 21, 22, 23, 24 & 25



Kempton Apartments
1 bedroom
apartment



PLOT 550 (1)
Kitchen 13'7" x 8'10" (4150 x 2685mm)
Living/Dining 15'2" x 11'1" (4635 x 3387mm)
Bedroom 10'11" x 9'10" (3321 x 3000mm)
Bathroom 7'10" x 6'8" (2400 x 2030mm)
TOTAL AREA 531 sq ft (49.4 sq m)
Terrace 10'4" x 5'8" (3160 x 1737mm)

Level 1



Kempton Apartments
2 bedroom
apartment



PLOTS 149 (2), 166 (3), 183 (4),
552 (5)

Kitchen
9'11" x 5'11" (3035 x 1800mm)

Living/Dining
13'8" x 13'8" (4175 x 4170mm)

Bedroom 1
14'5" x 9'11" (4390 x 3035mm)

En suite
7'10" x 6'3" (2400 x 1900mm)

Bedroom 2
14'5" x 8'11" (4392 x 2720mm)

Bathroom
7'10" x 6'8" (2380 x 2030mm)

TOTAL AREA
763 sq ft (70.8 sq m)

Balcony
12'9" x 5'8" (3889 x 1718mm)

Levels 2, 3, 4 & 5



PLOTS 157 (3), 174 (4), 191 (5),
554 (6)

Kitchen
15'6" x 7'10" (4724 x 2400mm)

Living/Dining
15'6" x 11'0" (4724 x 3341mm)

Bedroom 1
14'3" x 10'1" (4350 x 3077mm)

En suite
7'10" x 6'3" (2400 x 1900mm)

Bedroom 2
15'4" x 9'0" (4670 x 2750mm)

Bathroom
7'10" x 6'8" (2400 x 2030mm)

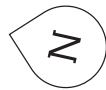
TOTAL AREA
832 sq ft (77.3 sq m)

Balcony
13'5" x 5'5" (4097 x 1646mm)

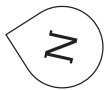
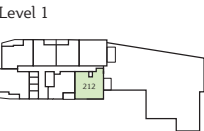
Levels 3, 4, 5 & 6



Kempton Apartments
2 bedroom
apartment



PLOT 212 (7)
Kitchen 13'9" x 6'8" (4203 x 2040mm)
Living/Dining 16'1" x 11'0" (4903 x 3350mm)
Bedroom 1 19'10" x 9'0" (6053 x 2750mm)
En suite 7'10" x 6'3" (2400 x 1900mm)
Bedroom 2 12'6" x 9'0" (3823 x 2750mm)
Bathroom 7'10" x 6'8" (2400 x 2030mm)
TOTAL AREA 805 sq ft (74.8 sq m)
Terrace 12'3" x 6'3" (3746 x 1900mm)

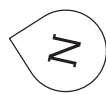


PLOTS 218 (8), 225 (9), 232 (10), 239 (11), 246 (12), 253 (13), 260 (14), 267 (15), 274 (16), 281 (17)
Kitchen 9'1" x 9'0" (2767 x 2738mm)
Living/Dining 21'4" x 11'4" (6503 x 3458mm)
Bedroom 1 18'9" x 9'0" (5723 x 2750mm)
En suite 7'8" x 6'3" (2325 x 1900mm)
Bedroom 2 15'0" x 9'0" (4573 x 2750mm)
Bathroom 7'8" x 6'8" (2325 x 2030mm)
TOTAL AREA 825 sq ft (76.6 sq m)
Balcony 18'11" x 7'9" (5774 x 2370mm)

Levels 8, 9, 10, 11, 12, 13, 14, 15, 16 & 17



Kempton Apartments
2 bedroom
apartment



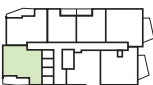
- PLOTS 219 (8), 226 (9), 233 (10), 240 (11), 247 (12), 254 (13), 261 (14), 268 (15), 275 (16), 282 (17)
- Kitchen**
13'7" x 6'8" (4153 x 2040mm)
- Living/Dining**
16'1" x 11'0" (4903 x 3350mm)
- Bedroom 1**
19'10" x 9'0" (6053 x 2750mm)
- En suite**
7'10" x 6'3" (2400 x 1900mm)
- Bedroom 2**
12'6" x 9'0" (3823 x 2750mm)
- Bathroom**
7'10" x 6'8" (2400 x 2030mm)
- TOTAL AREA**
805 sq ft (74.8 sq m)
- Balcony**
18'6" x 8'0" (5647 x 2441mm)

Levels 8, 9, 10, 11, 12, 13, 14, 15, 16 & 17

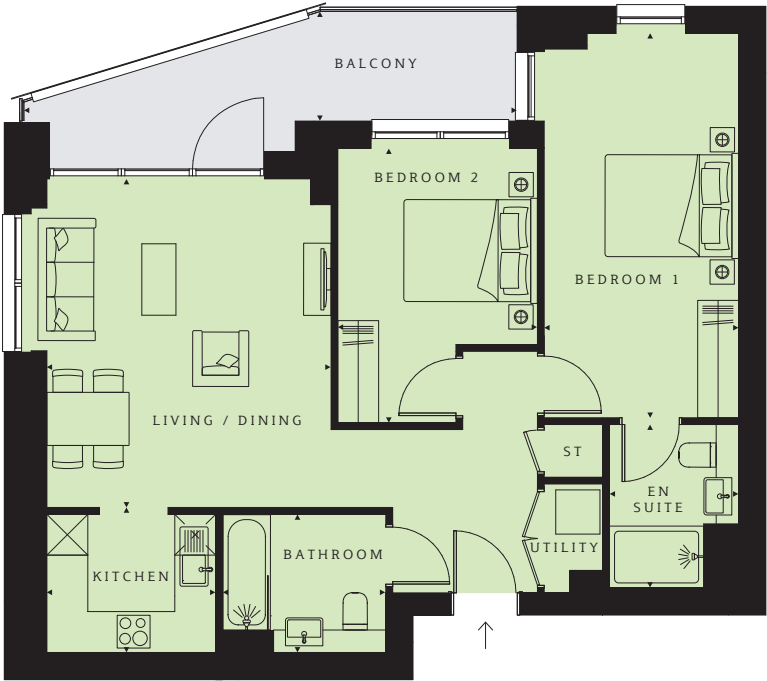
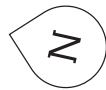


- PLOTS 221 (9), 228 (10), 235 (11), 242 (12), 249 (13), 256 (14), 263 (15), 270 (16), 277 (17), 284 (18), 290 (19), 296 (20), 302 (21), 308 (22), 314 (23), 320 (24), 326 (25)
- Kitchen**
10'11" x 7'0" (3332 x 2130mm)
- Living/Dining**
17'3" x 11'1" (5258 x 3383mm)
- Bedroom 1**
19'0" x 9'2" (5798 x 2805mm)
- En suite**
7'10" x 6'3" (2400 x 1900mm)
- Bedroom 2**
12'3" x 10'4" (3723 x 3150mm)
- Bathroom**
7'10" x 6'8" (2400 x 2030mm)
- TOTAL AREA**
791 sq ft (73.4 sq m)
- Balcony**
22'0" x 4'11" (6698 x 1494mm)

Levels 9, 10, 11, 12, 13, 14, 15, 16, 17, 18, 19, 20, 21, 22, 23, 24 & 25



Kempton Apartments
2 bedroom
apartment



PLOTS 222 (9), 229 (10), 236 (11), 243 (12), 250 (13), 257 (14), 264 (15), 271 (16), 278 (17)

Kitchen
8'2" x 7'0" (2485 x 2130mm)

Living/Dining
15'10" x 13'8" (4830 x 4175mm)

Bedroom 1
18'6" x 9'5" (5648 x 2858mm)

En suite
7'10" x 6'3" (2400 x 1900mm)

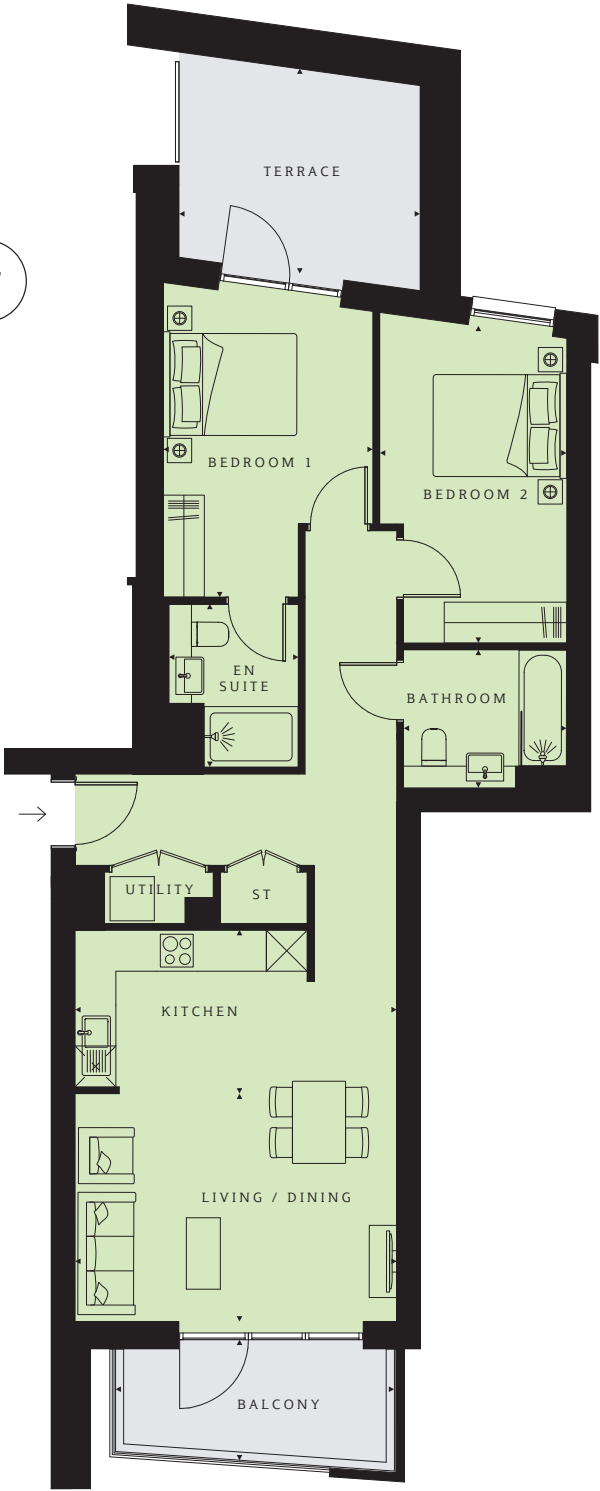
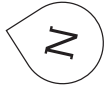
Bedroom 2
13'2" x 9'7" (4025 x 2933mm)

Bathroom
7'10" x 6'8" (2400 x 2030mm)

TOTAL AREA
783 sq ft (72.8 sq m)

Balcony
5'3" x 23'9" (1610 x 7249mm)

Levels 9, 10, 11, 12, 13, 14, 15, 16 & 17



PLOT 140 (2)

Kitchen
15'6" x 7'10" (4724 x 2400mm)

Living/Dining
15'6" x 11'0" (4724 x 3351mm)

Bedroom 1
14'4" x 10'1" (4357 x 3077mm)

En suite
7'10" x 6'3" (2400 x 1900mm)

Bedroom 2
15'3" x 9'0" (4660 x 2750mm)

Bathroom
7'10" x 6'8" (2400 x 2030mm)

TOTAL AREA
834 sq ft (77.5 sq m)

Terrace
11'8" x 9'11" (3545 x 3018mm)

Balcony
13'5" x 5'10" (4097 x 1786mm)

Level 2



Kempton Apartments
2 bedroom
apartment



PLOT 205 (6)
Kitchen 11'6" x 5'9" (3500 x 1750mm)
Living/Dining 22'2" x 10'2" (6752 x 3105mm)
Bedroom 1 14'8" x 10'8" (4470 x 3245mm)
Bedroom 2 10'1" x 8'2" (3070 x 2500mm)
Bathroom 7'10" x 6'8" (2400 x 2030mm)
TOTAL AREA 700 sq ft (65.1 sq m)
Winter Garden 18'4" x 4'10" (5600 x 1482mm)

Level 6

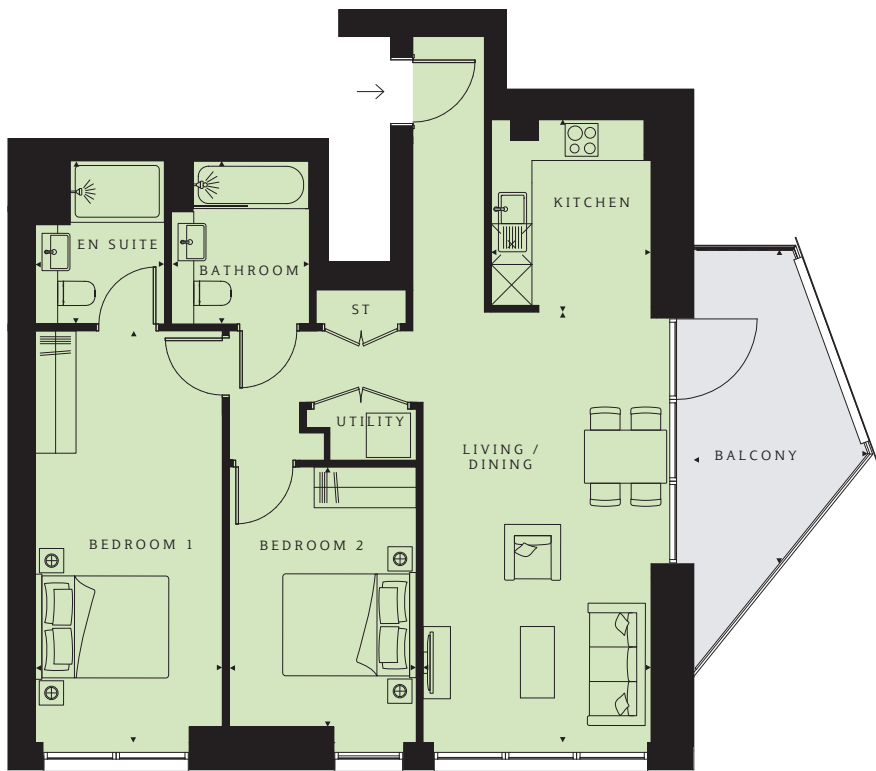
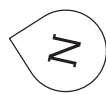


PLOT 549 (1)
Kitchen 11'0" x 6'1" (3351 x 1850mm)
Living/Dining 21'10" x 9'8" (6652 x 2956mm)
Bedroom 1 14'6" x 10'2" (4420 x 3094mm)
Bedroom 2 9'11" x 8'2" (3020 x 2500mm)
Bathroom 7'10" x 6'8" (2400 x 2030mm)
TOTAL AREA 672 sq ft (62.5 sq m)
Terrace 18'1" x 4'6" (5506 x 1370mm)
Winter Garden 18'0" x 5'0" (5499 x 1532mm)

Level 1



Kempton Apartments
2 bedroom
apartment



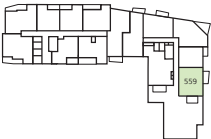
- PLOTS 288 (18), 294 (19), 300 (20), 306 (21), 312 (22), 318 (23), 324 (24), 330 (25)**
- Kitchen**
9'3" x 7'9" (2829 x 2350mm)
- Living/Dining**
20'9" x 11'0" (6326 x 3350mm)
- Bedroom 1**
19'10" x 9'0" (6053 x 2750mm)
- En suite**
7'10" x 6'3" (2400 x 1900mm)
- Bedroom 2**
12'6" x 9'0" (3823 x 2750mm)
- Bathroom**
7'10" x 6'8" (2400 x 2030mm)
- TOTAL AREA**
833 sq ft (77.4 sq m)
- Balcony**
15'2" x 8'5" (4617 x 2556mm)

Levels 18, 19, 20, 21, 22, 23, 24 & 25

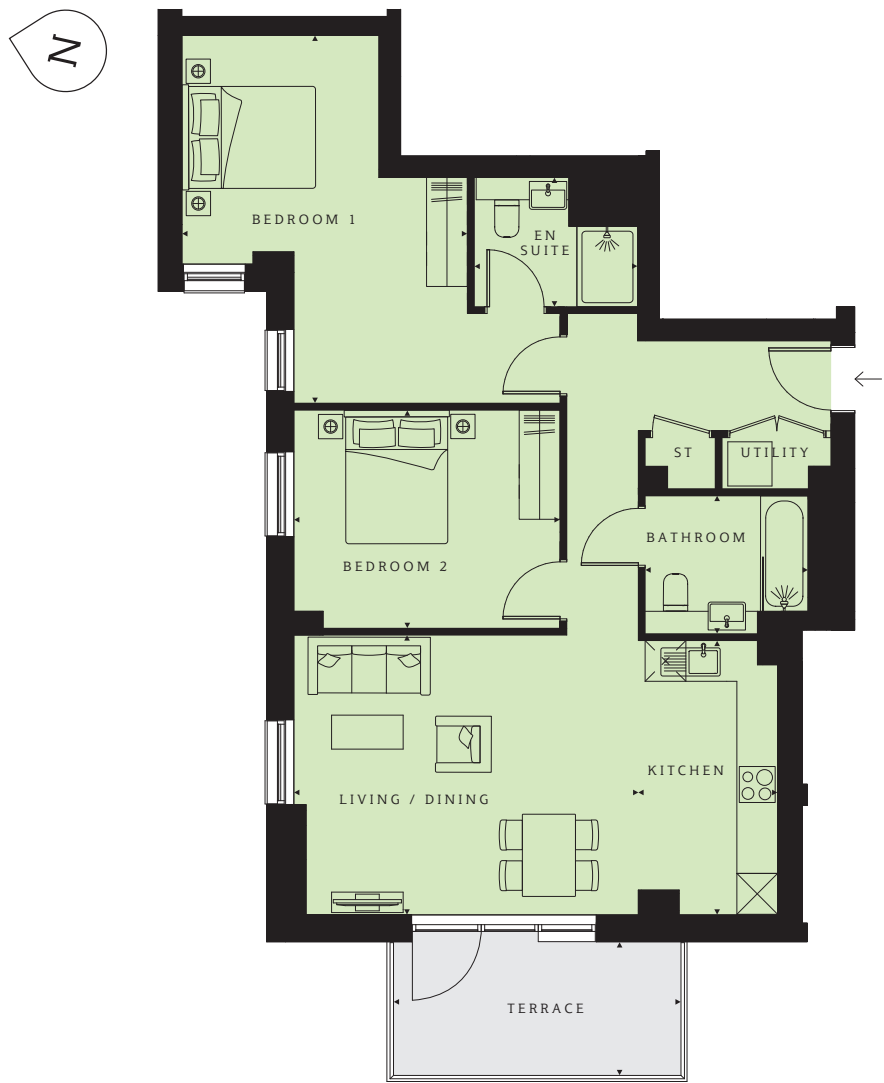


- PLOT 559 (6)**
- Kitchen**
8'11" x 8'2" (2725 x 2500mm)
- Living/Dining**
16'9" x 10'10" (5110 x 3295mm)
- Bedroom 1**
16'9" x 9'0" (5110 x 2750mm)
- En suite**
7'10" x 6'3" (2400 x 1900mm)
- Bedroom 2**
13'0" x 9'7" (3952 x 2930mm)
- Bathroom**
7'10" x 6'8" (2400 x 2030mm)
- TOTAL AREA**
736 sq ft (68.4 sq m)
- Balcony**
13'5" x 5'3" (4097 x 1599mm)
- Terrace**
11'10" x 6'6" (3600 x 1983mm)

Level 5



Kempton Apartments
2 bedroom
apartment



PLOT 560 (6)
Kitchen 13'3" x 6'9" (4032 x 2047mm)
Living/Dining 16'7" x 13'5" (5049 x 4087mm)
Bedroom 1 17'9" x 13'9" (5405 x 4194mm)
En suite 7'10" x 6'3" (2400 x 1900mm)
Bedroom 2 12'10" x 10'6" (3910 x 3206mm)
Bathroom 7'10" x 6'8" (2400 x 2030mm)
TOTAL AREA 871 sq ft (80.9 sq m)
Terrace 13'10" x 6'6" (4223 x 1975mm)

Level 6

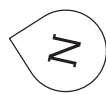


PLOT 126 (1)
Kitchen/Dining 13'1" x 9'10" (3987 x 3000mm)
Living 13'4" x 12'3" (4062 x 3734mm)
Bedroom 1 11'8" x 11'0" (3550 x 3353mm)
En suite 7'10" x 6'3" (2400 x 1900mm)
Bedroom 2 14'9" x 9'6" (4502 x 2900mm)
Bathroom 7'10" x 6'8" (2400 x 2030mm)
TOTAL AREA 792 sq ft (73.6 sq m)
Terrace 20'9" x 5'7" (6335 x 1694mm)

Level 1



Kempton Apartments
2 bedroom
apartment



PLOT 128 (1)

Kitchen
8'8" x 7'9" (2650 x 2350mm)

Living/Dining
17'3" x 13'5" (5246 x 4101mm)

Bedroom 1
11'0" x 10'3" (3346 x 3135mm)

En suite
7'10" x 6'3" (2400 x 1900mm)

Bedroom 2
11'4" x 10'7" (3457 x 3217mm)

Bathroom
7'10" x 6'8" (2400 x 2030mm)

TOTAL AREA
776 sq ft (72.1 sq m)

Terrace
37'4" x 5'1" (11373 x 1561mm)

Level 6



PLOT 211 (7)

Kitchen
9'1" x 7'6" (2758 x 2285mm)

Living/Dining
18'10" x 11'4" (5728 x 3458mm)

Bedroom 1
18'6" x 9'0" (5648 x 2750mm)

En suite
7'10" x 6'3" (2400 x 1900mm)

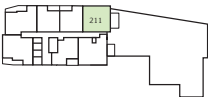
Bedroom 2
12'9" x 9'0" (3898 x 2750mm)

Bathroom
7'10" x 6'8" (2400 x 2030mm)

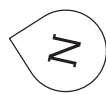
TOTAL AREA
758 sq ft (70.4 sq m)

Terrace
15'10" x 6'7" (4837 x 1996mm)

Level 7



Kempton Apartments
2 bedroom
apartment



PLOT 132 (1)

Kitchen
9'2" x 5'11" (2805 x 1800mm)

Living/Dining
13'8" x 13'1" (4170 x 4000mm)

Bedroom 1
15'0" x 9'0" (4565 x 2744mm)

En suite
7'10" x 6'3" (2400 x 1900mm)

Bedroom 2
10'0" x 9'0" (3039 x 2740mm)

Bathroom
7'10" x 6'8" (2400 x 2030mm)

TOTAL AREA
713 sq ft (66.2 sq m)

Terrace
12'9" x 5'5" (3889 x 1645mm)

Level 1



PLOTS 133 (1), 150 (2),
167 (3), 184 (4), 553 (5)

Kitchen
10'2" x 6'9" (3090 x 2050mm)

Living/Dining
18'11" x 11'1" (5774 x 3387mm)

Bedroom 1
16'11" x 9'0" (5157 x 2750mm)

En suite
7'10" x 6'3" (2400 x 1900mm)

Bedroom 2
11'2" x 11'2" (3400 x 3392mm)

Bathroom
7'10" x 6'7" (2400 x 2018mm)

TOTAL AREA
784 sq ft (72.9 sq m)

Balcony
13'6" x 5'5" (4119 x 1639mm)

Levels 1, 2, 3, 4 & 5



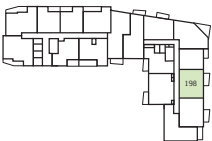
Kempton Apartments
2 bedroom
apartment



PLOT 198 (5)

- Kitchen**
11'10" x 6'9" (3600 x 2050mm)
- Living/Dining**
13'0" x 11'0" (3970 x 3360mm)
- Bedroom 1**
16'7" x 9'3" (5070 x 2820mm)
- En suite**
8'0" x 7'10" (2448 x 2395mm)
- Bedroom 2**
12'6" x 9'3" (3820 x 2815mm)
- Bathroom**
7'10" x 6'8" (2400 x 2030mm)
- TOTAL AREA**
741 sq ft (68.8 sq m)
- Balcony**
13'1" x 5'6" (3996 x 1669mm)

Level 5



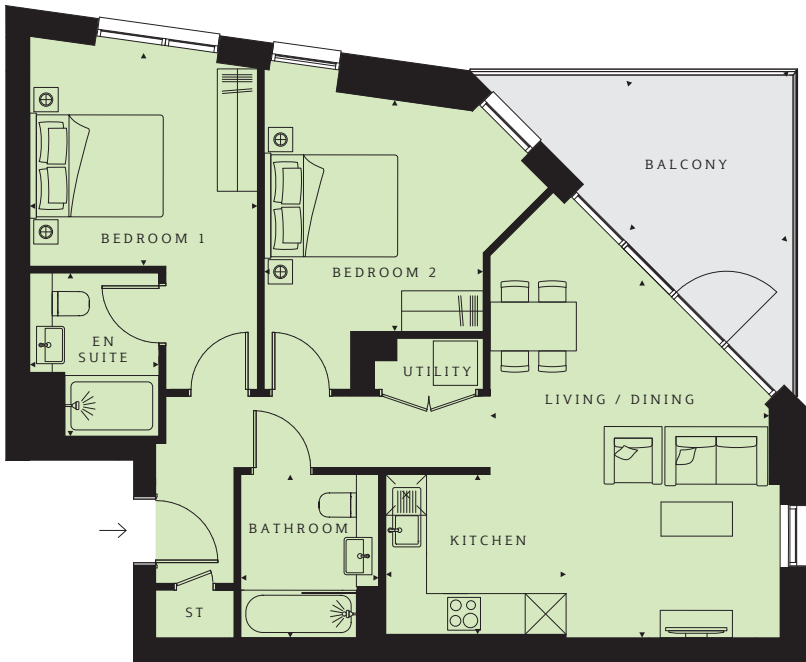
PLOT 204 (6)

- Kitchen**
12'10" x 7'11" (3908 x 2405mm)
- Living/Dining**
18'7" x 9'11" (5668 x 3034mm)
- Bedroom 1**
18'7" x 10'8" (4191 x 3245mm)
- Bedroom 2**
10'0" x 8'0" (3060 x 2448mm)
- Bathroom**
6'8" x 7'10" (2395 x 2030mm)
- TOTAL AREA**
686 sq ft (63.7 sq m)
- Winter Garden**
18'4" x 4'5" (5600 x 1357mm)

Level 6



Kempton Apartments
2 bedroom
apartment



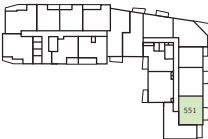
PLOTS 145 (2), 162 (3), 179 (4), 196 (5), 557 (6)
Kitchen 8'8" x 7'9" (2650 x 2350mm)
Living/Dining 17'3" x 13'5" (5246 x 4101mm)
Bedroom 1 11'0" x 10'3" (3346 x 3135mm)
En suite 7'10" x 6'3" (2400 x 1900mm)
Bedroom 2 11'2" x 10'7" (3400 x 3217mm)
Bathroom 7'10" x 6'8" (2400 x 2030mm)
TOTAL AREA 777 sq ft (72.2 sq m)
Balcony 11'0" x 10'10" (3349 x 3314mm)

Levels 2, 3, 4, 5 & 6



PLOT 551 (5)
Kitchen 11'8" x 6'9" (3550 x 2050mm)
Living/Dining 13'2" x 11'0" (4020 x 3360mm)
Bedroom 1 16'7" x 9'2" (5050 x 2800mm)
En suite 8'0" x 7'10" (2450 x 2395mm)
Bedroom 2 12'6" x 9'3" (3810 x 2815mm)
Bathroom 7'10" x 6'8" (2400 x 2030mm)
TOTAL AREA 737 sq ft (68.5 sq m)
Balcony 13'6" x 5'0" (4119 x 1523mm)

Level 5

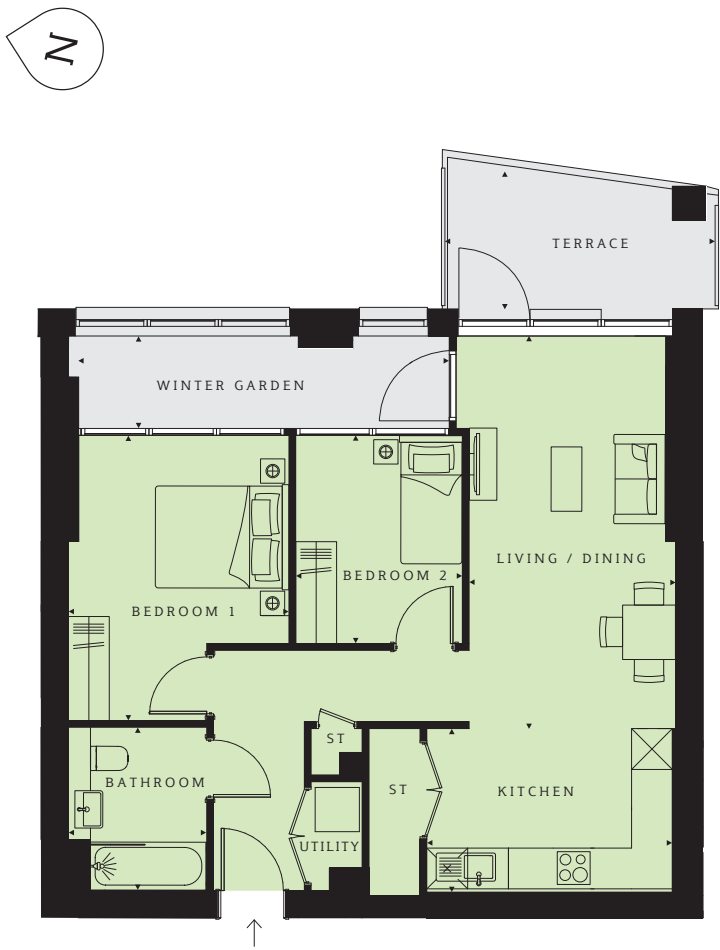


Kempton Apartments
2 bedroom
apartment



PLOT 548 (1)
Kitchen 15'0" x 7'10" (4573 x 2400mm)
Living/Dining 15'0" x 11'5 " (4573 x 3471mm)
Bedroom 1 14'5" x 10'1" (4386 x 3077mm)
En suite 7'10" x 6'6" (2400 x 1982mm)
Bedroom 2 15'1" x 9'0" (4610 x 2750mm)
Bathroom 7'10" x 6'8" (2400 x 2030mm)
TOTAL AREA 826 sq ft (76.8 sq m)
Balcony 13'5" x 5'6" (4097 x 1684mm)
Terrace 12'0" x 9'10" (3656 x 2993mm)

Level 1



PLOT 547 (1)
Kitchen 11'10" x 7'11" (3608 x 2405mm)
Living/Dining 18'11" x 9'11" (5768 x 3035mm)
Bedroom 1 13'9" x 10'8" (4190 x 3239mm)
Bedroom 2 10'0" x 8'0" (3060 x 2448mm)
Bathroom 7'10" x 6'8" (2400 x 2030mm)
TOTAL AREA 683 sq ft (63.5 sq m)
Terrace 13'0" x 6'7" (3970 x 2014mm)
Winter Garden 17'10" x 4'5" (5444 x 1357mm)

Level 1



Kempton Apartments
2 bedroom
apartment



PLOT 332 (26)
Kitchen 12'11" x 8'9" (3930 x 2675mm)
Living/Dining 24'3" x 17'1" (7403 x 5202mm)
Bedroom 1 23'0" x 12'3" (7013 x 3722mm)
En suite 7'10" x 6'3" (2400 x 1900mm)
Bedroom 2 19'6" x 11'3" (5938 x 3430mm)
Bathroom 7'10" x 6'8" (2400 x 2030mm)
TOTAL AREA 1181 sq ft (109.7 sq m)
Terrace 23'0" x 12'1" (7016 x 3688mm)

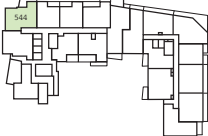


PLOT 544 (1)
Kitchen 8'0" x 7'0" (2430 x 2130mm)
Living/Dining 15'10" x 12'1" (4830 x 3684mm)
Bedroom 1 18'6" x 9'5" (5648 x 2858mm)
En suite 7'10" x 6'3" (2400 x 1900mm)
Bedroom 2 13'7" x 10'7" (4130 x 3233mm)
Bathroom 7'7" x 6'8" (2300 x 2030mm)
TOTAL AREA 763 sq ft (70.9 sq m)
Terrace 17'6" x 10'4" (5324 x 3141mm)

Level 26



Level 1



Kempton Apartments
2 bedroom
apartment



PLOTS 143 (2), 160 (3), 177 (4),
194 (5), 555 (6)

Kitchen
13'2" x 9'10" (4012 x 3000mm)

Living/Dining
13'4" x 12'7" (4062 x 3826mm)

Bedroom 1
11'8" x 11'0" (3550 x 3353mm)

En suite
7'10" x 6'3" (2400 x 1900mm)

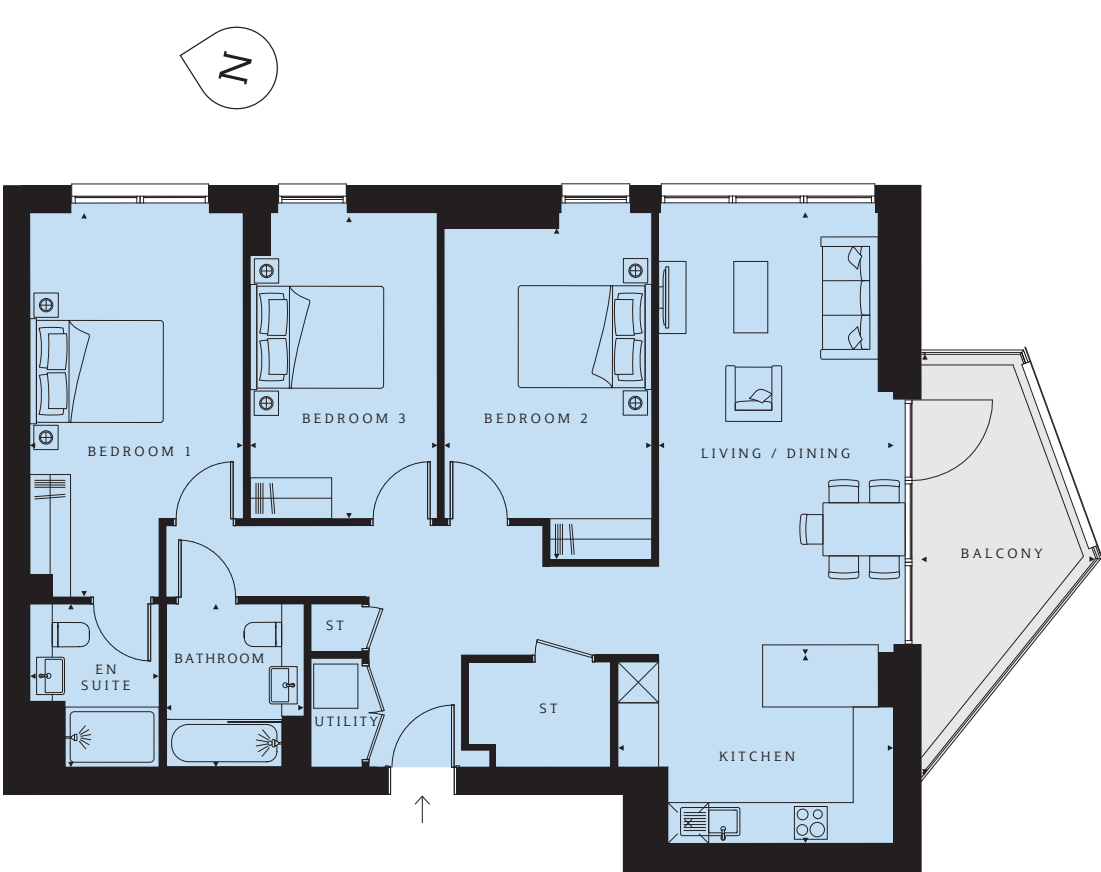
Bedroom 2
14'9" x 9'7" (4502 x 2912mm)

Bathroom
7'10" x 6'8" (2400 x 2030mm)

TOTAL AREA
790 sq ft (73.4 sq m)

Balcony
13'8" x 5'11" (4157 x 1812mm)

Kempton Apartments
3 bedroom
apartment



PLOTS 287 (18), 293 (19),
299 (20), 305 (21), 311 (22),
317 (23), 323 (24)

Kitchen
13'4" x 9'1" (4058 x 2767mm)

Living/Dining
21'4" x 11'4" (6503 x 3458mm)

Bedroom 1
18'6" x 10'4" (5648 x 3137mm)

En suite
7'10" x 6'3" (2400 x 1900mm)

Bedroom 2
16'0" x 10'0" (4868 x 3050mm)

Bedroom 3
14'7" x 9'0" (4440 x 2753mm)

Bathroom
7'10" x 6'8" (2400 x 2030mm)

TOTAL AREA
1126 sq ft (104.6 sq m)

Balcony
15'2" x 8'5" (4612 x 2556mm)

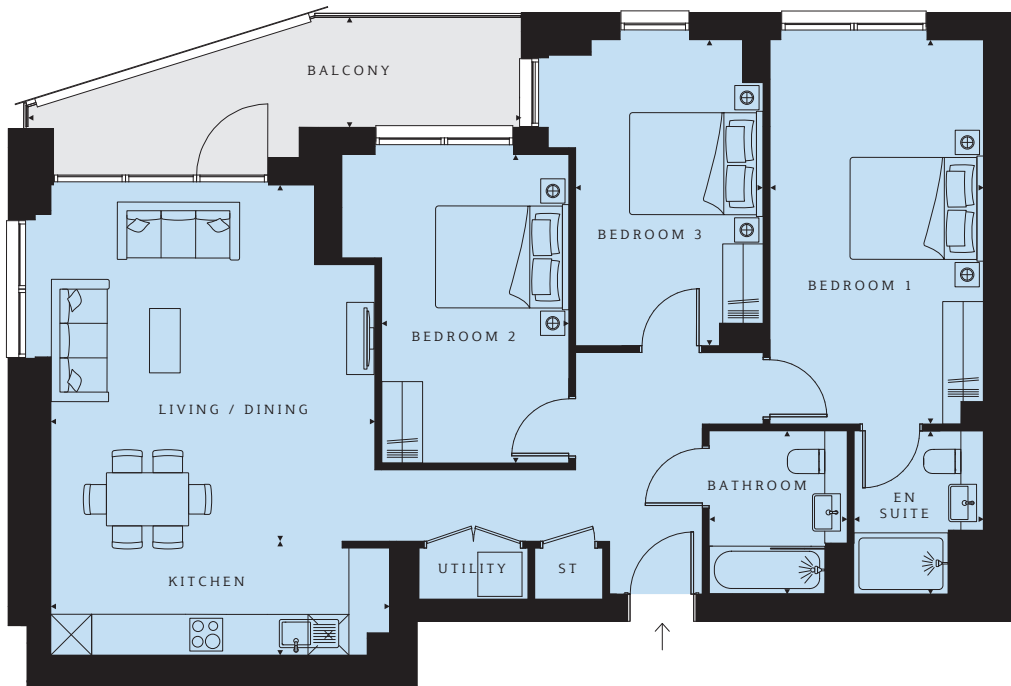
Levels 2, 3, 4, 5 & 6



Levels 18, 19, 20, 21, 22, 23 & 24



Kempton Apartments
3 bedroom
apartment



PLOTS 285 (18), 291 (19),
297 (20), 303 (21), 309 (22),
315 (23), 321 (24)

Kitchen
16'4" x 5'6" (4980 x 1676mm)

Living/Dining
17'2" x 15'7" (5235 x 4760mm)

Bedroom 1
18'6" x 10'4" (5648 x 3137mm)

En suite
7'10" x 6'3" (2400 x 1900mm)

Bedroom 2
14'10" x 9'0" (4525 x 2750mm)

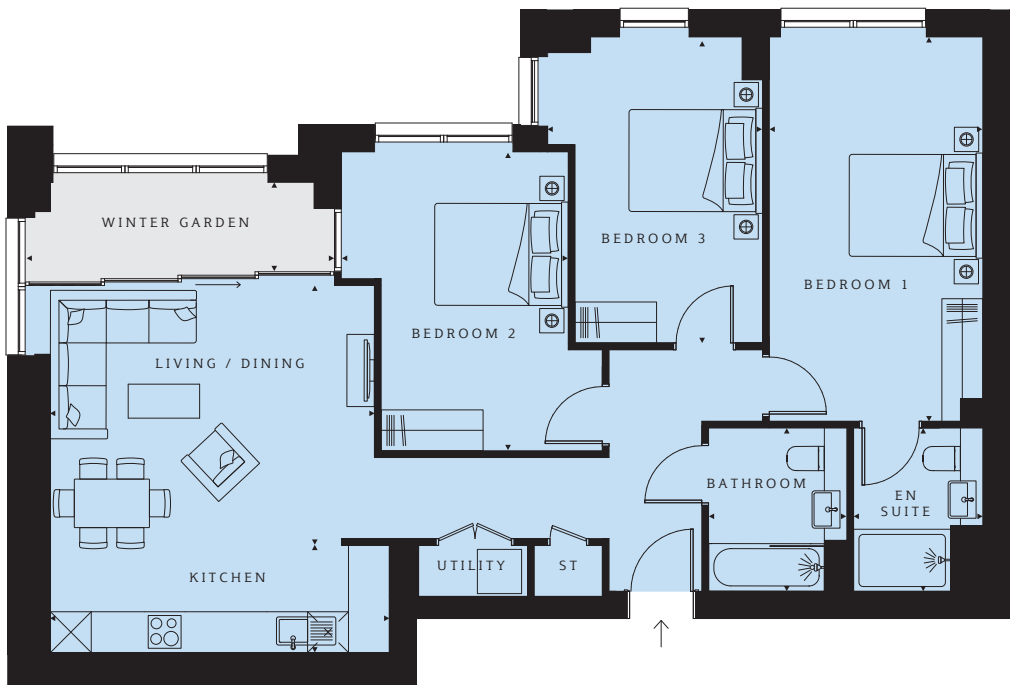
Bedroom 3
14'9" x 9'0" (4498 x 2750mm)

Bathroom
7'10" x 6'8" (2400 x 2030mm)

TOTAL AREA
1080 sq ft (100.3 sq m)

Balcony
23'9" x 5'4" (7249 x 1615mm)

Levels 18, 19, 20, 21, 22, 23 & 24



PLOT 327 (25)

Kitchen
16'4" x 5'2" (4980 x 1575mm)

Living/Dining
15'7" x 12'6" (4760 x 3820mm)

Bedroom 1
18'6" x 10'4" (5648 x 3142mm)

En suite
7'10" x 6'3" (2400 x 1900mm)

Bedroom 2
14'5" x 10'11" (4385 x 3335mm)

Bedroom 3
14'7" x 10'4" (4445 x 3153mm)

Bathroom
7'10" x 6'8" (2400 x 2030mm)

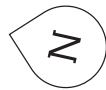
TOTAL AREA
1014 sq ft (94.2 sq m)

Winter Garden
14'10" x 4'4" (4525 x 1315mm)

Level 25

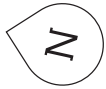


Kempton Apartments
3 bedroom
apartment



PLOT 329 (25)
Kitchen 12'10" x 7'9" (3923 x 2353mm)
Living/Dining 16'11" x 11'7" (5159 x 3528mm)
Bedroom 1 18'6" x 10'4" (5648 x 3137mm)
En suite 7'10" x 6'3" (2400 x 1900mm)
Bedroom 2 13'1" x 9'0" (3990 x 2750mm)
Bedroom 3 14'9" x 9'0" (4498 x 2750mm)
Bathroom 7'10" x 6'8" (2400 x 2030mm)
TOTAL AREA 1011 sq ft (93.9 sq m)
Winter Garden 20'11" x 5'1" (6378 x 1558mm)

Level 25



PLOT 333 (26)
Kitchen 11'6" x 9'10" (3500 x 3000mm)
Living/Dining 20'11" x 19'5" (6370 x 5921mm)
Bedroom 1 17'0" x 15'6" (5185 x 4731mm)
En suite 1 7'10" x 6'3" (2400 x 1900mm)
Bedroom 2 16'7" x 9'11" (5047 x 3029mm)
En suite 2 7'10" x 6'3" (2400 x 1900mm)
Bedroom 3 14'2" x 10'3" (4327 x 3120mm)
Bathroom 7'10" x 6'8" (2400 x 2030mm)
TOTAL AREA 1546 sq ft (143.6 sq m)
Terrace 29'8" x 16'2" (9045 x 4920mm)
Balcony 10'4" x 5'8" (3160 x 1737mm)

Level 26

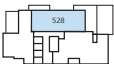


Kempton Apartments
3 bedroom
apartment



PLOT 528 (26)
Kitchen 13'9" x 6'4" (4200 x 1930mm)
Living/Dining 22'0" x 16'3" (6713 x 4949mm)
Bedroom 1 14'7" x 13'1" (4443 x 4000mm)
En suite 7'10" x 6'8" (2400 x 2030mm)
Bedroom 2 13'8" x 10'1" (4169 x 3073mm)
Bedroom 3 13'9" x 9'8" (4200 x 2950mm)
Bathroom 7'10" x 6'8" (2400 x 2030mm)
TOTAL AREA 1217 sq ft (113.1 sq m)
Terrace 25'7" x 11'11" (7803 x 3625mm)
Balcony 19'10" x 3'6" (6056 x 1068mm)

Level 26



Specification

Kitchen	General
Individually designed kitchens with soft-close doors and drawers	BT TV/Sky+/FM connectivity to living area
Matching worktops and full-height upstands	Downlighters to kitchen and bathrooms
Under-cabinet lighting	Ceiling pendants to hallway, living area and bedrooms
Stainless steel single bowl sink and chrome tap	Fibre broadband connectivity
Fully integrated appliances including single oven, ceramic hob, hood, dishwasher and fridge freezer	
	Bedrooms
	BT TV/FM connectivity
Bathroom	Communal areas and facilities
White semi-recessed wash hand basin	CCTV security system coverage across all residential buildings and entrances
Back-to-wall WC pan with soft-close WC seat	Car parking available*
Concealed cistern and dual flushplate	Lifts to all floors
White bath	Interior-designed entrance foyer
Heated towel rail	Shops, restaurants and a multiplex cinema within the development
Ceramic wall tiles	
En suite	
White semi-recessed wash hand basin	
Back-to-wall WC pan with soft-close WC seat	
Concealed cistern and dual flushplate	
White shower tray	
Chrome shower doors	
Heated towel rail	
Shaver socket	
Ceramic wall tiles	



* Car parking available for selected plots only at an additional cost. Speak to a Sales Adviser for more information.

Images may contain upgrades available at an additional cost

Why Barratt London?

Barratt London’s vision

Since the construction of our first London development in 1982, our goal has been to provide high-quality homes for all Londoners by focusing on excellence in design, construction and customer service. The supply of new housing is essential to the continued growth of London as a major global city and Barratt London is proud to be contributing to this with the delivery of 1,500 new homes each year.

Five-star customer service

As part of Barratt Developments PLC, we are one of the UK’s largest housebuilders and are fully committed to delivering a superior service for our customers and have been awarded the maximum five-star rating for customer satisfaction by the Home Builders Federation every year since 2010*. For our customers, this means that when you buy a Barratt London home, you can be confident you are buying a home of quality and receiving the very best in customer service.

*We are the only major national housebuilder to be awarded this award 11 years running. “we” refers to the Barratt Developments PLC group brands including Barratt London, Barratt Homes and David Wilson Homes.

Real peace of mind

Not only does every Barratt London home come with a ten-year structural guarantee from the NHBC, it also comes with a two-year fixtures and fittings warranty**, giving you added peace of mind from the moment you move in.

**First two years covered by Builder Warranty & NHBC Guarantee or similar. Years three-ten covered by NHBC insurance or similar. Full exclusions and limitations can be found on the NHBC website.



Harrow Square HA1



Aldgate Place E1



Camden Courtyards NW1



Nine Elms Point SW6



Hendon Waterside NW9

The Consumer Code

The Consumer Code for Home Builders (“the Code”), which came into effect in April 2010, applies to all home builders registered with the UK’s main new Home Warranty Bodies: NHBC, Premier Guarantee and LABC Warranty.

The Code gives protection and rights to purchasers of new homes. It requires all new home buyers to be treated fairly and ensure they are fully informed about their purchase before and after they sign the contract.

The aim of the Code is for all new home buyers to:

- be treated fairly
- know what levels of service to expect
- be given reliable information about their purchase and their consumer rights before and after they move in
- know how to access speedy, low-cost dispute resolution arrangements to deal with complaints about breaches of the Code.

The Code reinforces best practice among home builders to encourage a consistently high level of information and customer service. It builds on successful efforts already made by the industry to improve consumer satisfaction in recent years.

The Code covers every stage of the home-buying purchase – pre-contract, exchange of contract and during occupation.

As a 5 Star Housebuilder, we are committed to the Consumer Code for Home Builders. For more information on the Consumer Code for Home Builders, please visit <http://www.consumercode.co.uk/>

**CONSUMER
CODE FOR
HOME BUILDERS**

www.consumercode.co.uk



Harrow Square HA1

FIND YOUR PIECE
OF LONDON

+44 (0)330 057 6666
SEARCH HIGH STREET QUARTER
HOUNSLOW

Computer generated images, maps and development layouts are intended for illustrative purposes and should be treated as general guidance only. The features, designs, materials and visual depictions of and in our Show Apartments and in our Show Apartment photography must be treated as general illustration and guidance. Images may also include upgrades which are available at extra cost. Furniture and furnishings are not included. Fixtures, fittings and specification may be subject to change as necessary and without notice and their accuracy or completeness is not guaranteed. Nor are they intended to form part of any contract or a warranty unless specifically incorporated into the contract. Please ask your Sales Adviser for the current specification. Individual features such as windows, brick and other materials' colours may vary, as may drainage, heating and electrical layouts. Floor plans are intended to give a general indication of the proposed floor layout only. The dimensions are accurate to within + or - 50mm. Dimensions should not be used for carpet or flooring sizes, appliance spaces or items of furniture. Please ask our Sales Adviser for details of the treatments specified for individual plots. Specification may be subject to change as necessary and without notice. Development layouts and landscaping, specification, dimensions and computer generated images are not intended to form part of any contract or warranty unless specifically incorporated in writing into the contract. The development name, High Street Quarter Hounslow and building names are for marketing purposes only and may not be the designated postal address, which may be determined by The Post Office. All information in this document is correct to the best of our knowledge at the time of issue January 2021. Calls to 03 numbers are charged at the same rate as dialling an 01 or 02 number. If your fixed line or mobile service has inclusive minutes to 01/02 numbers, then calls to 03 are counted as part of this inclusive call volume. Non-BT customers and mobile phone users should contact their service providers for more information about the costs of calls.

