



the residence

|  
CLAPHAM

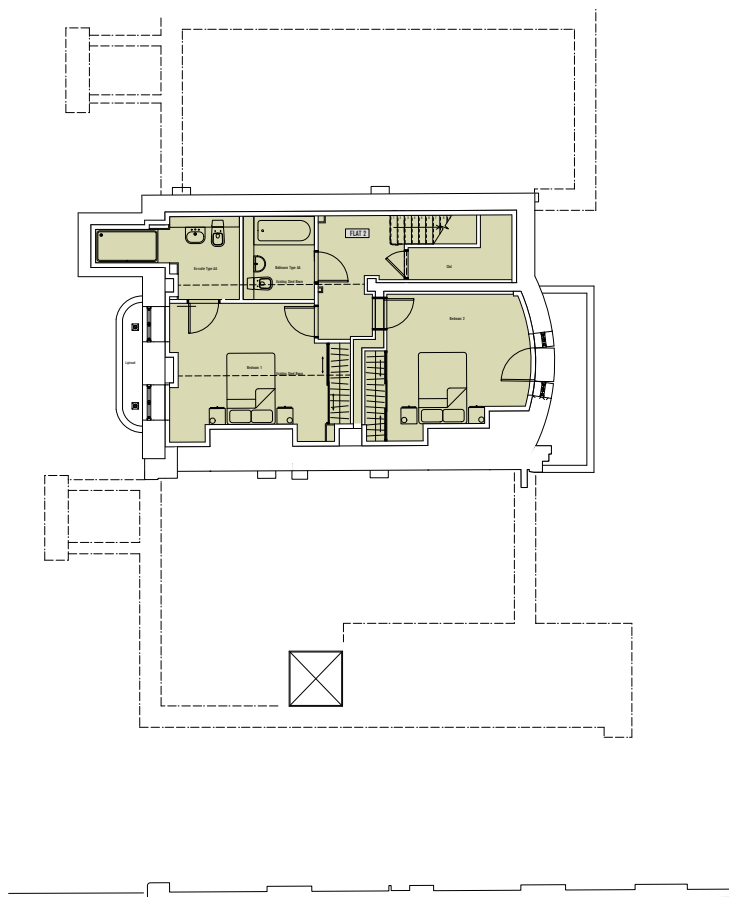
FLOOR PLANS

2 BED FLAT - Duplex

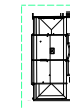
00.02 FLAT 2

GF GIA = 47.7m<sup>2</sup> Approx.  
BF GIA = 58.7m<sup>2</sup> Approx.

Rooms	m
Bedroom 1	4.46 x 3.90
En Suite	4.04 x 2.33
Bedroom 2	4.04 x 3.63
Bathroom	2.00 x 2.34



SITE PLAN KEY



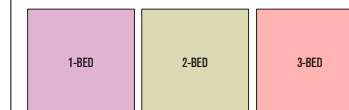
Block A



Block B

BLOCK A  
Level B1

FLATS  
00.02  
(Basement Floor)



\*\*\*Where possible measurements have been taken from the central point of the room.

\*\*\*The listed dimensions are indicative and are for reference only. These dimensions do not relate to the overall apartment areas, i.e. angled floor plans and internal rooms.

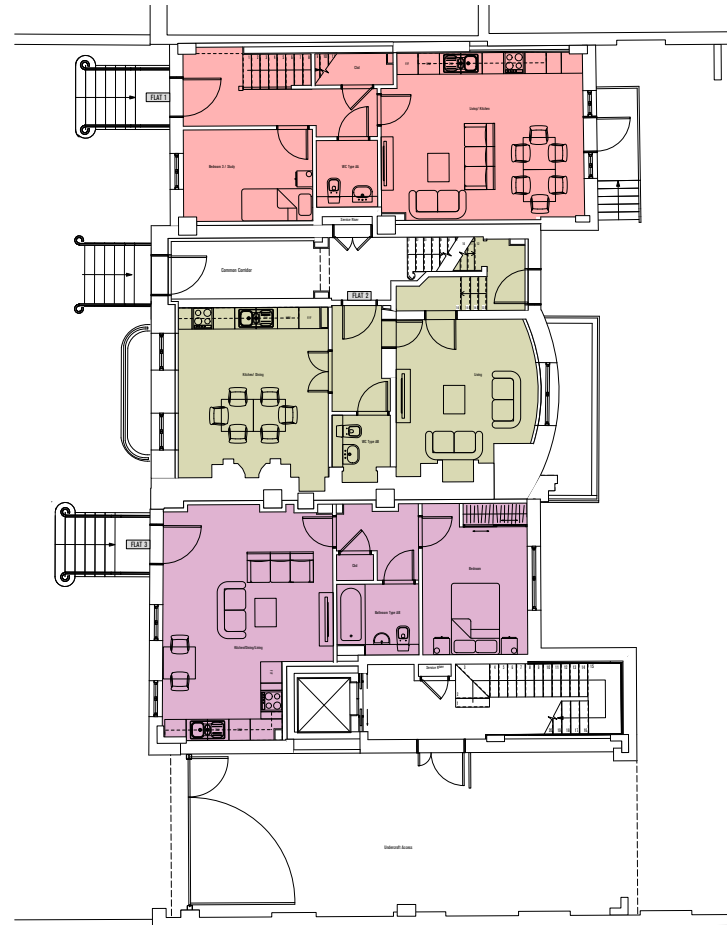
FLAT LEVEL KEY



Block A



Block B



## 3 BED FLAT - Duplex 00.01 FLAT 1

GF GIA = 52.0m<sup>2</sup> Approx.  
FF GIA = 52.0m<sup>2</sup> Approx.

Rooms	m
Living Area	5.68 x 2.90
Kitchen	5.68 x 1.80
Bedroom 3	3.62 x 2.57
WC	1.71 x 1.87

## 2 BED FLAT - Duplex 00.02 FLAT 2

GF GIA = 47.7m<sup>2</sup> Approx.  
BF GIA = 58.7m<sup>2</sup> Approx.

Rooms	m
Living Room	3.98 x 3.95
Kitchen/Dining Area	4.21 x 4.78
WC	1.63 x 1.88

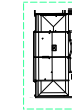
## 1 BED FLAT 00.02 FLAT 3

GIA = 50.5m<sup>2</sup> Approx.

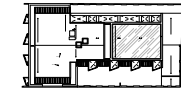
Rooms	m
Living Area	4.77 x 4.42
Kitchen	2.75 x 2.20
Bedroom	2.94 x 4.24
Bathroom	2.30 x 2.00



### SITE PLAN KEY



Block A



Block B

**BLOCK A**  
Level 00

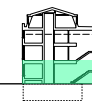
**FLATS**  
00.01 - 00.03



\*\*\*Where possible measurements have been taken from the central point of the room.

\*\*\*The listed dimensions are indicative and are for reference only. These dimensions do not relate to the overall apartment areas, i.e. angled floor plans and internal rooms.

### FLAT LEVEL KEY



Block A



Block B

theresidenceclapham.com





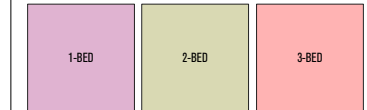
theresidenceclapham.com

Rooms	m
Bedroom 1	$4.81 \times 3.51$
Bathroom	$3.23 \times 2.12$



### Block B

02.01 - 02.04  
(First Floor)



\*\*\*The listed dimensions are indicative and are for reference only. These dimensions do not relate to the overall apartment areas. i.e. angled floor plans and internal rooms.

Block B



## SITE PLAN KEY



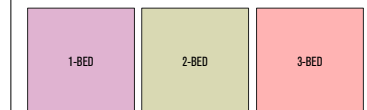
Block A



Block B

## BLOCK B Level 01

## FLATS 01.01 - 01.08

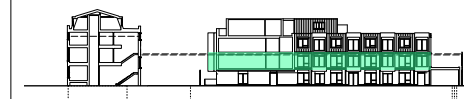


\*\*\*Where possible measurements have been taken from the central point of the room.

\*\*\*The listed dimensions are indicative and are for reference only. These dimensions do not relate to the overall apartment areas. i.e. angled floor plans and internal rooms.

<b>1 BED FLAT 01.01 FLAT 11</b> GIA = 58.6m <sup>2</sup> Approx.	<b>1 BED FLAT 01.02 FLAT 12</b> GIA = 54.0m <sup>2</sup> Approx.	<b>1 BED FLAT 01.03 FLAT 13</b> GIA = 53.1m <sup>2</sup> Approx.	<b>2 BED FLAT 01.04 FLAT 14</b> GIA = 78.0m <sup>2</sup> Approx.	<b>2 BED FLAT 01.05 FLAT 15</b> GIA = 72.3m <sup>2</sup> Approx.	<b>2 BED FLAT 01.06 FLAT 16</b> GIA = 71.5m <sup>2</sup> Approx.	<b>2 BED FLAT 01.07 FLAT 17</b> GIA = 71.5m <sup>2</sup> Approx.	<b>2 BED FLAT 01.08 FLAT 18</b> GIA = 71.4m <sup>2</sup> Approx.
<b>Rooms</b> m Living Area 3.50 x 2.84 Kitchen 5.32 x 2.65 Bedroom 4.17 x 3.93 Bathroom 2.02 x 2.88 Balcony 2.83 x 2.52	<b>Rooms</b> m Living Area 5.10 x 3.05 Kitchen 3.51 x 3.05 Bedroom 5.61 x 2.90 Bathroom 2.30 x 2.02 Balcony 1.65 x 3.02	<b>Rooms</b> m Living Area 5.08 x 2.97 Kitchen 3.54 x 2.97 Bedroom 5.58 x 2.90 Bathroom 2.31 x 2.02 Balcony 1.64 x 2.96	<b>Rooms</b> m Living Area 4.65 x 3.20 Kitchen 4.14 x 3.20 Bedroom 1 3.64 x 3.87 Bedroom 2 4.46 x 2.60 Bathroom 2.40 x 2.92 Balcony 2.86 x 2.31	<b>Rooms</b> m Living Area 3.32 x 5.17 Kitchen 2.87 x 3.41 Bedroom 1 2.76 x 4.68 En Suite 2.07 x 1.90 Bedroom 2 2.86 x 3.70 Bathroom 2.07 x 2.30 Balcony 2.52 x 2.46	<b>Rooms</b> m Living Area 3.27 x 5.17 Kitchen 2.81 x 3.41 Bedroom 1 2.76 x 4.67 En Suite 2.07 x 1.90 Bedroom 2 2.81 x 3.07 Bathroom 2.07 x 2.30 Balcony 2.52 x 2.46	<b>Rooms</b> m Living Area 3.27 x 5.17 Kitchen 2.81 x 3.41 Bedroom 1 2.76 x 4.67 En Suite 2.07 x 1.90 Bedroom 2 2.81 x 3.07 Bathroom 2.07 x 2.30 Balcony 2.52 x 2.46	<b>Rooms</b> m Living Area 3.27 x 5.17 Kitchen 2.81 x 3.41 Bedroom 1 2.76 x 4.67 En Suite 2.06 x 1.90 Bedroom 2 2.81 x 3.07 Bathroom 2.06 x 2.30 Balcony 2.60 x 2.44

## FLAT LEVEL KEY



Block A

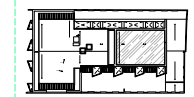
Block B



SITE PLAN KEY



Block A



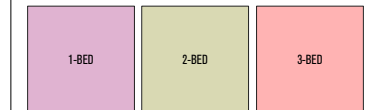
Block B

BLOCK B

Level 02

FLATS

02.01 - 02.08



\*\*\*Where possible measurements have been taken from the central point of the room.

\*\*\*The listed dimensions are indicative and are for reference only. These dimensions do not relate to the overall apartment areas. i.e. angled floor plans and internal rooms.

<b>1 BED FLAT</b> <b>02.01 FLAT 19</b> <b>GIA = 58.6m² Approx.</b>	<b>1 BED FLAT</b> <b>02.02 FLAT 20</b> <b>GIA = 54.0m² Approx.</b>	<b>1 BED FLAT</b> <b>02.03 FLAT 21</b> <b>GIA = 53.1m² Approx.</b>
<b>Rooms</b> m Living Area 3.41 x 2.83 Kitchen 5.23 x 2.66 Bedroom 3.86 x 3.80 Bathroom 2.42 x 2.88 Balcony 2.82 x 2.50	<b>Rooms</b> m Living Area 5.11 x 3.05 Kitchen 3.51 x 3.05 Bedroom 4.96 x 2.90 Bathroom 2.28 x 2.02 Balcony 1.64 x 3.00	<b>Rooms</b> m Living Area 5.10 x 2.97 Kitchen 3.54 x 2.97 Bedroom 5.61 x 2.90 Bathroom 2.28 x 2.02 Balcony 1.62 x 2.95
<b>2 BED FLAT</b> <b>02.04 FLAT 22</b> <b>GIA = 78.0m² Approx.</b>	<b>2 BED FLAT</b> <b>02.05 FLAT 23</b> <b>GIA = 72.3m² Approx.</b>	<b>2 BED FLAT</b> <b>02.06 FLAT 24</b> <b>GIA = 71.5m² Approx.</b>
<b>Rooms</b> m Living Area 4.65 x 3.20 Kitchen 4.15 x 3.20 Bedroom 1 3.64 x 3.87 Bedroom 2 4.46 x 2.60 Bathroom 2.40 x 2.92 Balcony 2.86 x 2.31	<b>Rooms</b> m Living Area 3.32 x 5.15 Kitchen 2.86 x 3.14 Bedroom 1 2.76 x 4.68 En Suite 2.07 x 1.90 Bedroom 2 2.86 x 3.70 Bathroom 2.07 x 2.30 Balcony 2.50 x 2.44	<b>Rooms</b> m Living Area 3.27 x 5.15 Kitchen 2.81 x 3.14 Bedroom 1 2.76 x 4.68 En Suite 2.07 x 1.90 Bedroom 2 2.81 x 3.70 Bathroom 2.07 x 2.30 Balcony 2.50 x 2.44
<b>2 BED FLAT</b> <b>02.07 FLAT 25</b> <b>GIA = 71.5m² Approx.</b>	<b>2 BED FLAT</b> <b>02.08 FLAT 26</b> <b>GIA = 71.4m² Approx.</b>	
<b>Rooms</b> m Living Area 3.27 x 5.15 Kitchen 2.81 x 3.14 Bedroom 1 2.76 x 4.68 En Suite 2.07 x 1.90 Bedroom 2 2.81 x 3.70 Bathroom 2.07 x 2.30 Balcony 2.50 x 2.44	<b>Rooms</b> m Living Area 3.32 x 5.15 Kitchen 2.81 x 3.14 Bedroom 1 2.76 x 4.68 En Suite 2.06 x 1.90 Bedroom 2 2.81 x 3.70 Bathroom 2.06 x 2.30 Balcony 2.60 x 2.42	

FLAT LEVEL KEY

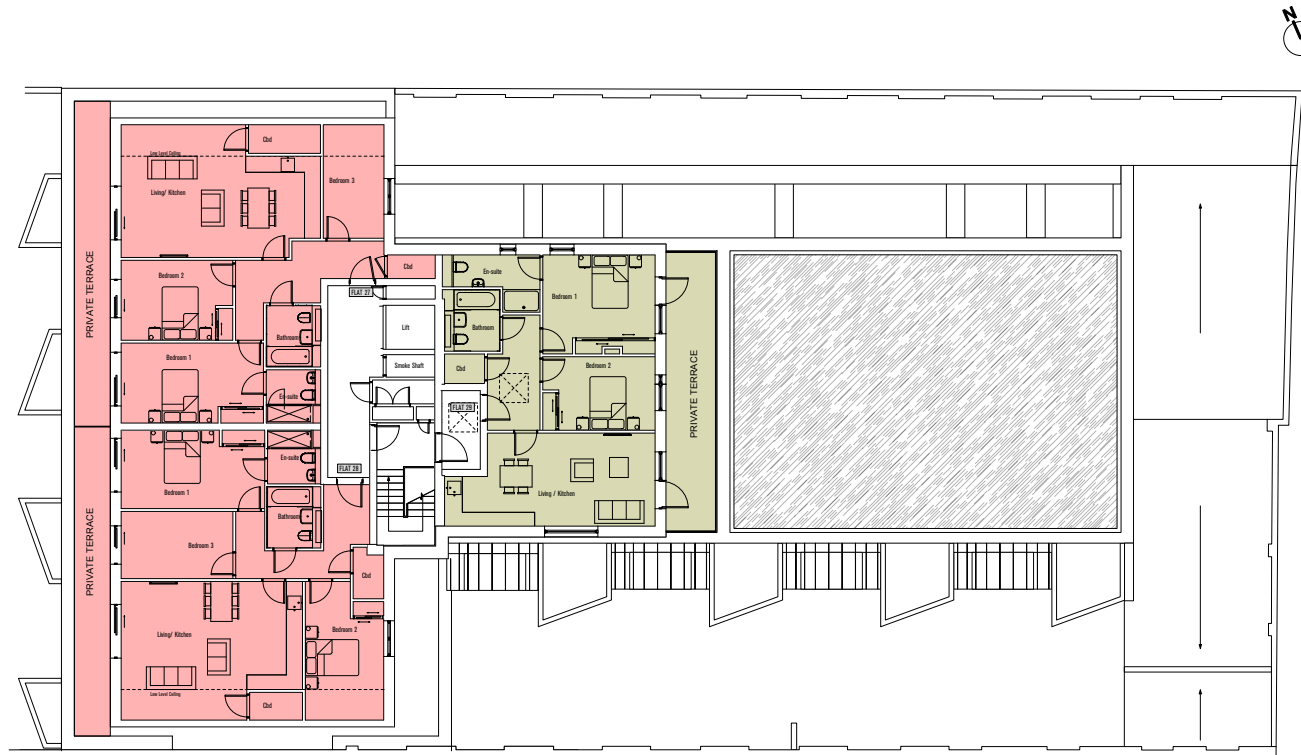


Block A



Block B



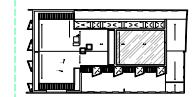


3 BED FLAT 03.01 FLAT 27		3 BED FLAT 03.02 FLAT 28		2 BED FLAT 03.03 FLAT 29	
GIA = 98.8 m <sup>2</sup> approx		GIA = 100.5 m <sup>2</sup> approx		GIA = 74.6 m <sup>2</sup> approx	
Rooms	m	Rooms	m	Rooms	m
Living Area	4.71 x 3.97	Living Area	4.70 x 4.20	Living Area	4.51 x 3.50
Kitchen	2.80 x 3.80	Kitchen	2.08 x 4.04	Kitchen	3.37 x 3.50
Bedroom 1	3.00 x 5.32	Bedroom 1	5.38 x 2.93	Bedroom 1	4.20 x 3.70
En Suite	2.03 x 2.00	En Suite	2.00 x 2.01	En Suite	3.65 x 2.14
Bedroom 2	4.17 x 3.00	Bedroom 2	2.93 x 5.20	Bedroom 2	4.20 x 2.75
Bedroom 3	2.27 x 4.25	Bedroom 3	4.18 x 2.51	Bathroom	2.07 x 2.30
Bathroom	2.03 x 2.30	Bathroom	2.00 x 2.30	Terrace	1.85 x 10.42
Terrace	1.35 x 12.17	Terrace	1.35 x 11.60		

## SITE PLAN KEY



Block A



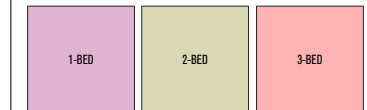
Block B

## BLOCK B

Level 03

## FLATS

03.01 - 03.03



\*\*\*Where possible measurements have been taken from the central point of the room.

\*\*\*The listed dimensions are indicative and are for reference only. These dimensions do not relate to the overall apartment areas. i.e. angled floor plans and internal rooms.

## FLAT LEVEL KEY



Block A



Block B

theresidenceclapham.co.uk  
02045 272 001

**"Alliance Investments Ltd" give notice that:**

1. They are not authorised to make or give any representations or warranties in relation to the property either here or elsewhere, either on their own or otherwise. They assume no responsibility for any statement that may be made in these particulars. These particulars do not form part of any offer or contract and must not be relied upon as statement or representations of fact.
2. Any areas, measurements or distances are approximate. Figures provided for living costs (for example, service charges) are estimates only and may be subject to change. The text, images, and plans are for guidance only and are not necessarily comprehensive. It should not be assumed that the property has all necessary planning, building regulations or other consents and Alliance Investments Ltd have not tested any services, equipment or facilities. Purchasers must satisfy themselves by inspection or otherwise.
3. These particulars were prepared from preliminary plans and specifications before the completion of the properties. These particulars, together with any images and/or figures that they contain, are intended only as a guide. Properties may have been changed during construction and final finishes could vary. Prospective purchasers should not rely on this information but must get their solicitor to check the plans, specification and property information provided during the sales process. Any product names referenced are indicative of the quality and may be subject to change in the final specification. The developer retains the right to amend the final specification of properties.